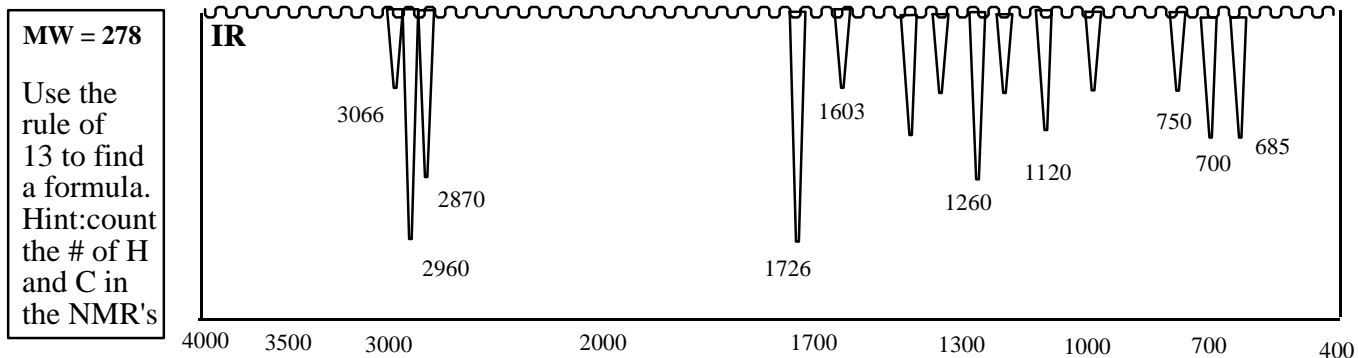
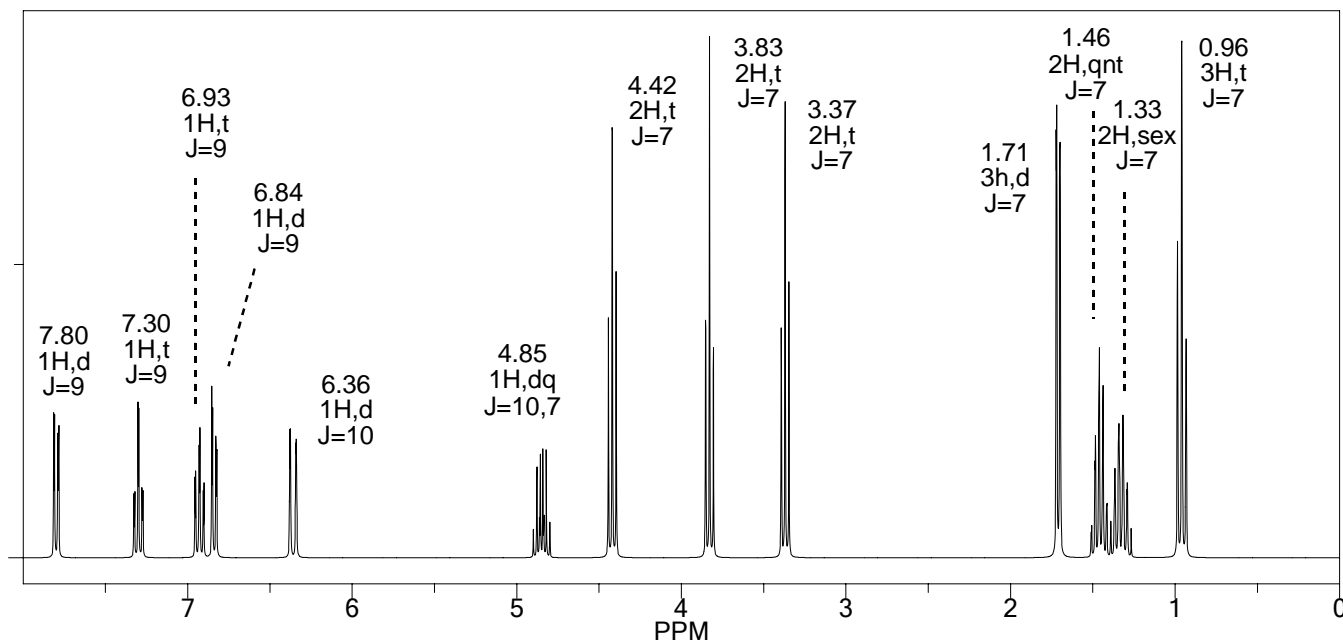


Problem 8g - Predict a reasonable structure from the spectral information provided below. As much as possible show how the spectral information supports your structure. Show all of your work.

IR Spectrum: Interpret as fully as possible from structure. Not every peak is interpretable. (units = cm^{-1})



Proton NMR: interpret data (calculate chemical shifts to confirm they match actual values, N = # neighbors)



^{13}C and DEPT NMR: As much as possible match the ^{13}C peaks to carbons in your structure.

Top spectrum = DEPT-135 ^{13}C NMR - CH_3 and CH appear (up) and CH_2 appears (down)

