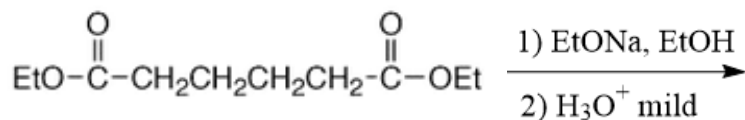


CHM 3150 Organic Chemistry II  
Dr. Laurie S. Starkey, Cal Poly Pomona  
Chapter 21, Enols & Enolates, Part 3 – [Practice Problems](#)

For clicker question voting, go to:  
<https://pollev.com/lauriestarke263>

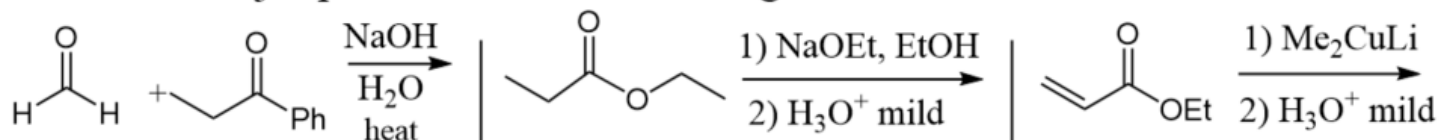


1 Predict the major product.



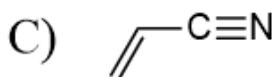
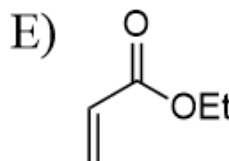
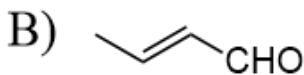
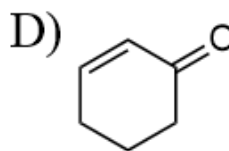
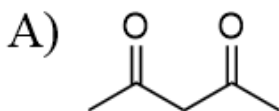
2

Predict the major products for the following reactions.

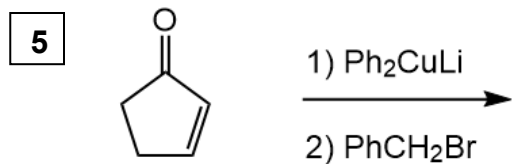
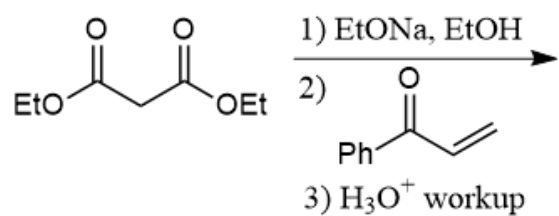


3

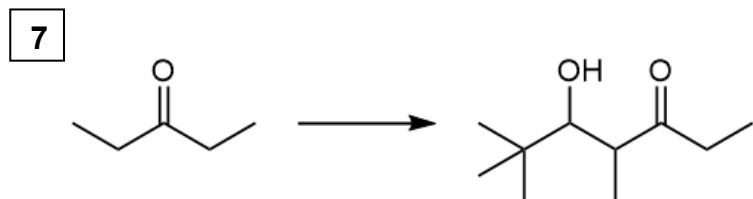
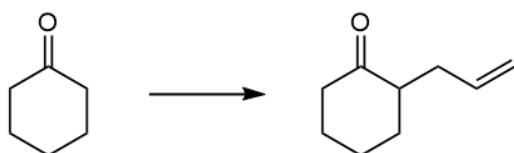
Which of the following is NOT an example of a "Michael acceptor"?



4 Predict the major product.

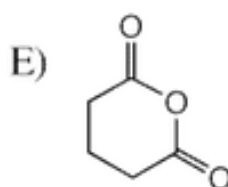
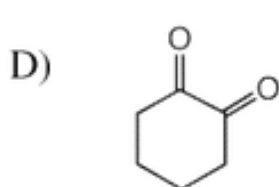
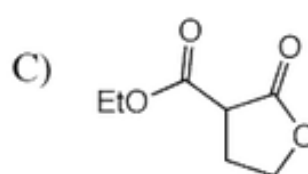
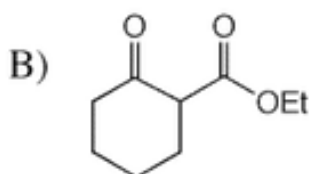
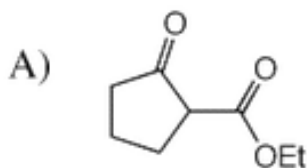
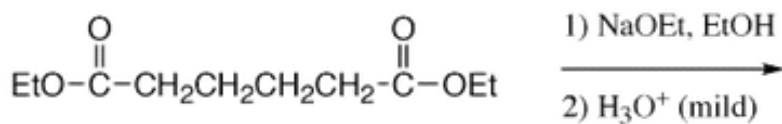


6 Provide the necessary reagents.



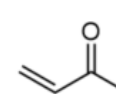
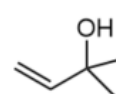
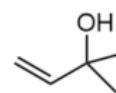
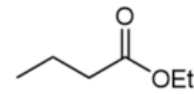
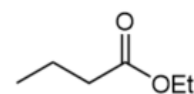
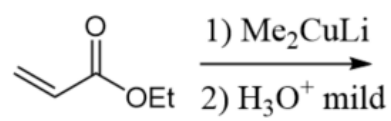
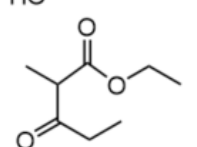
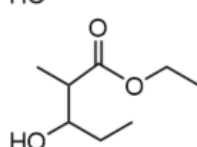
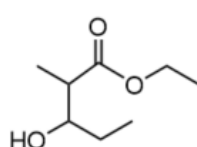
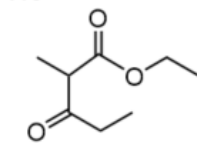
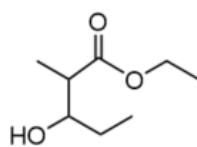
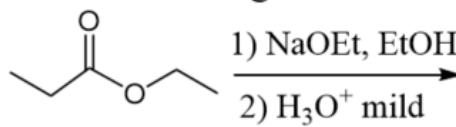
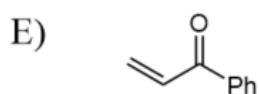
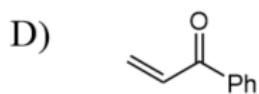
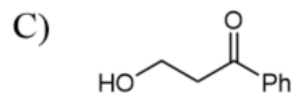
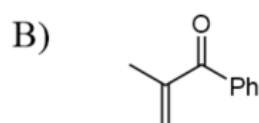
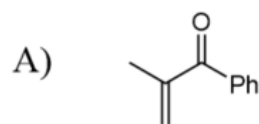
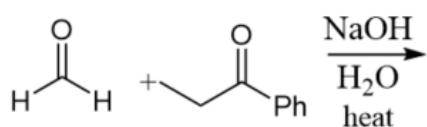
1

Predict the major product.



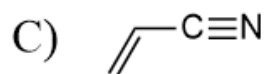
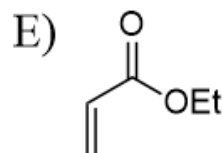
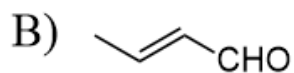
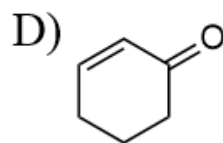
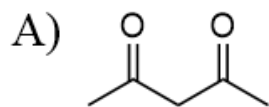
2

Predict the major products for the following reactions.



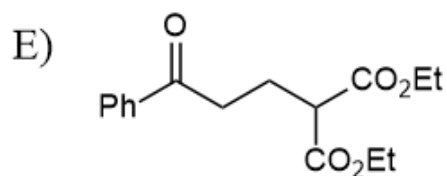
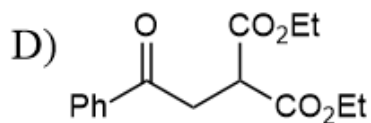
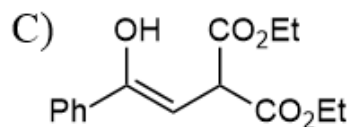
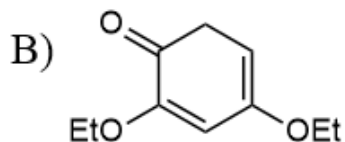
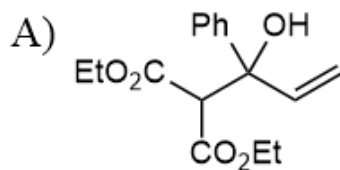
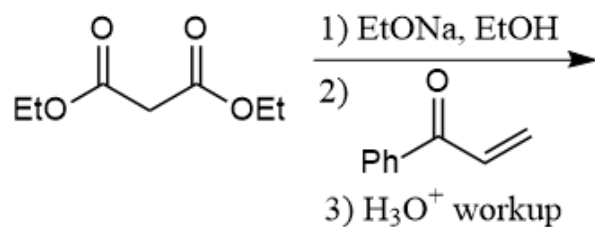
3

Which of the following is NOT an example of a "Michael acceptor"?

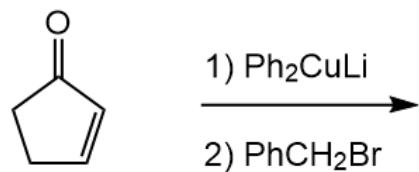


Predict the major product.

4



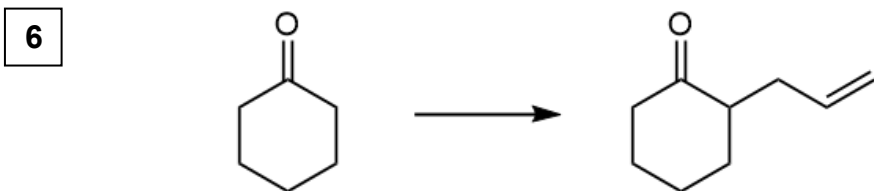
5 Predict the major product.



- A)
- B)
- C)
- D)
- E)

See SkillBuilder 21.9

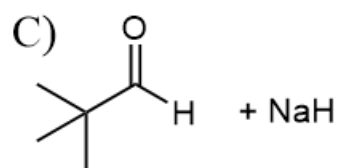
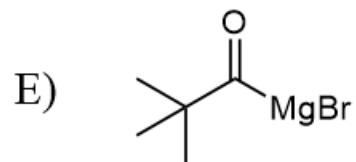
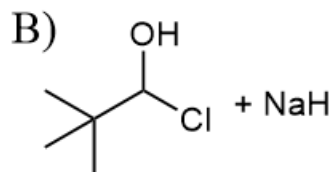
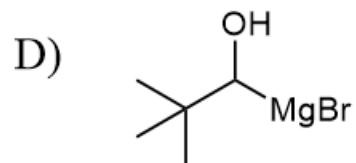
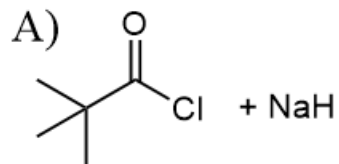
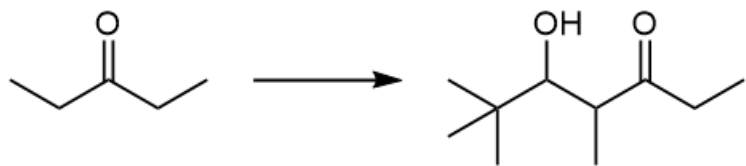
Provide the necessary reagents.



- A) 1) LDA  
2)
- B) 1) LDA  
2)
- C) 1)   
2)  $\text{H}_3\text{O}^+$
- D) 1) + TsOH  
2)   
3)  $\text{H}_3\text{O}^+$ , heat
- E) 1) + TsOH  
2) LDA  
3)   
4)  $\text{H}_3\text{O}^+$ , heat

7

Provide the necessary reagent(s), assuming there is an aqueous acidic workup.



8