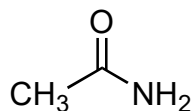
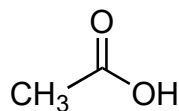


3A) (7 pts) Which is the **better electrophile** (**A**, **B** or neither)? Explain, using appropriate drawings to support your answer. Be sure to address resonance effects, rather than leaving group ability.

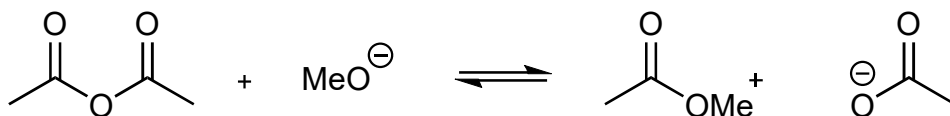


A

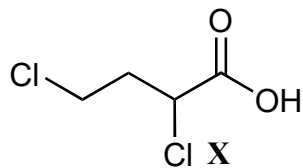


B

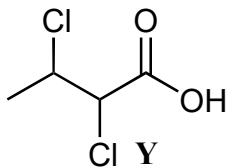
3B) (6 pts) Which reaction is favored (forward, reverse, or neither)? Explain briefly.



3C) (7 pts) Which is the **stronger acid**? Explain, using appropriate drawings to support your answer.



X



Y