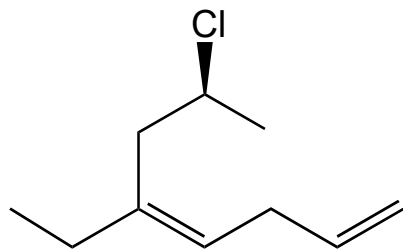
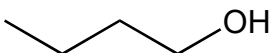


2A) (8 pts) Name the following compounds according to the IUPAC rules. Remember to designate stereochemistry, when appropriate. **Show all your work to receive full credit.**

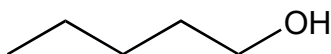


2B) (5 pts) Provide a drawing for the following compound: **5,6,6-trimethyl-4-(2-methylpropyl)-2-heptyne.**

2C) (5 points) Which compound is more soluble in water (**X**, **Y** or neither)? Explain briefly.



X



Y