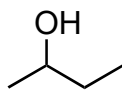
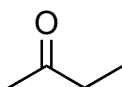


Page 2 - 2A. (8 pts) **NO EXPLAIN = NO CREDIT**a) Which compound (X or Y or neither) has the higher boiling point? Explain briefly.

X



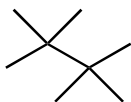
Y

b) Which compound (I or II or neither) has the higher boiling point? Explain briefly.

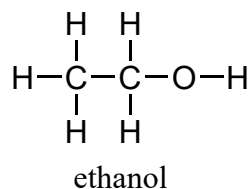
I



II



2B. (5 pts) Show the hydrogen bonding that takes place **between two molecules of ethanol** (one of the two molecules of ethanol is already drawn below).



2C. (8 pts)

- 1) **Complete the Lewis structure** for the following molecule (only the sigma bonds are shown).
- 2) **Provide a 3-D sketch** for this molecule (only the best resonance form).

Remember to locate the maximum number of atoms in the plane of the page.

