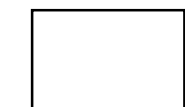
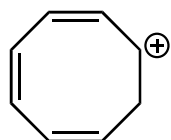
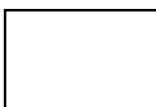


3A) (6 pts) For each of the following, **complete the Lewis structure** (supply any missing lone pairs) and determine whether or not it is aromatic. For each, indicate the electron count you used to make your decision, and **circle any lone pairs involved in aromaticity**.

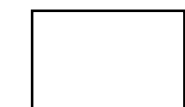
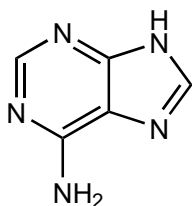


electron count?
 (circle involved
 lone pairs)

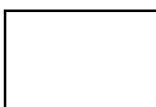


aromatic?

if no,
 why not?



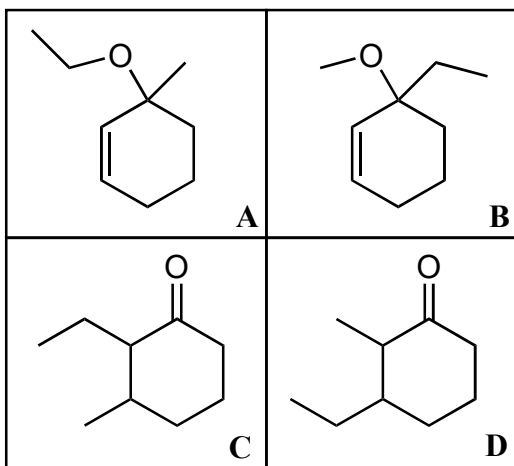
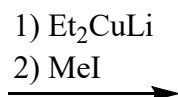
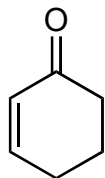
electron count?
 (circle involved
 lone pairs)



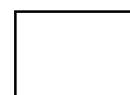
aromatic?

if no,
 why not?

3B) (8 pts) Predict the major product (**A/B/C/D**) and provide a complete mechanism for its formation. Pay close attention to details, including lone pairs, formal charges, and the use of curved arrows.



major product?



mechanism: